

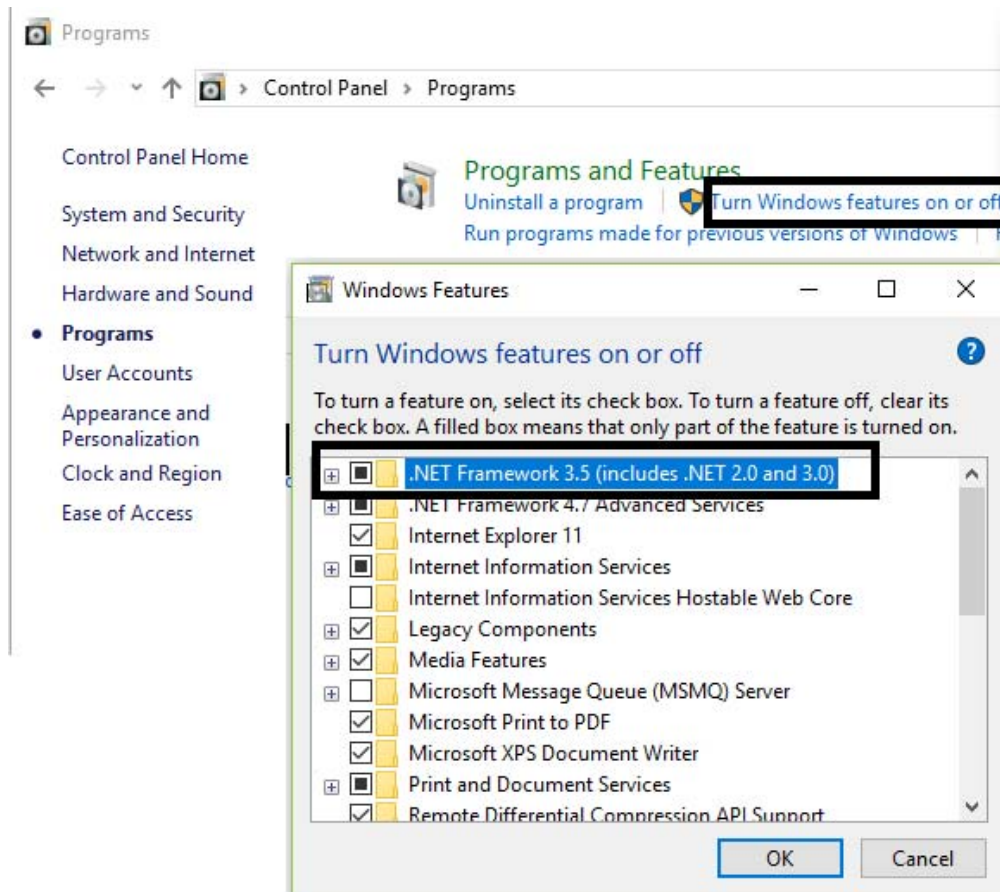
Print Job Report 4.0 (Optional Free Add-on)

Print Job Report is a tool which allows you to connect to the database (MS Access or SQL server) to generate and view 100 reports including 64 default reports and 36 customized reports, and provides the ability to export these reports to Adobe-PDF, MS-Word, MS-Excel and Rich Text formats. These reports are designed for your print cost analysis and client billing. The reports can be created in any language automatically and emailed to you.

Print Job Report 4.0 can be installed on any Windows 32-bit or 64-bit computer. If Print Job Report and Print Job Manager are installed on the same computer, the database file "printSaver.mdb" is located in the installation folder of Print Job Manager (e.g. C:\Program Files (x86)\PrinterAdmin Software\PrinterAdmin Print Job Manager). If Print Job Report and Print Job Manager are installed on different computer, you can share the database folder from the computer where Print Job Manager is installed, Print Job Report can connect to the shared database remotely (on the second computer) to generate reports. (e.g. \\Print Job Manager Computer Name\Shared Database Folder\printSaver.mdb).

1. Turn on the feature ".NET Frameworks 3.5 (includes .NET 2.0 and 3.0)".

- 1.1. Click Windows **Start**, and click **Control panel**
- 1.2. Click **Programs** and then click **Programs and Features**
- 1.3. Click **Turn Windows Features on or off**
- 1.4. Select **.NET Frameworks 3.5 (includes .NET 2.0 and 3.0)**
- 1.5. Click **OK** and close the **Programs and Features** window



2. Double click "PrintJobReport.exe" to install Print Job Report.

3. Follow the on-screen instructions.

4. After the installation completes, double-click the shortcut “Print Job Report” on your desktop or select "Start → Programs → Reporting Tool → Print Job Report" to run the program.

5. Select the included sample databases to test how it works. The sample database named “printSaver_Sample.mdb” is located in the installation folder of Print Job Report. (E.g. C:\Program Files\Reporting Tool\Print Job Report). The real database file “printSaver.mdb” is located in the installation folder of Print Job Manager (e.g. C:\Program Files (x86)\PrinterAdmin Software\PrinterAdmin Print Job Manager).

For details, visit

English

<https://www.printeradmin.com/printer-manager-rpt/>

Español

<https://www.printeradmin.com/spanish/control-de-impresion-rpt/>

Français

<https://www.printeradmin.com/french/logiciel-gestion-impression-rpt/>

Português

<https://www.printeradmin.com/portuguese/control-de-impresao-rpt/>

Deutsch

<https://www.printeradmin.com/germany/druckmanagement-rpt/>

Italiano

<https://www.printeradmin.com/italian/gestione-stampa-rpt/>

中文简体

https://www.printeradmin.com/chinese_jian/print-management-rpt/

中文繁體

<https://www.printeradmin.com/chinese/print-management-rpt/>

Uninstall Print Job Report 4.0

1. Open Add/Remove Programs.

2. Select Print Job Report.

3. Click on the Remove button.